

## Agfa Healthcare.



**Current Road:** Aram Bagh Road  
**Old Street Name:** Ram Bagh Road  
**Construction Material:** Cement blocks  
**Coordinates:** 24°51'17.1"N  
 67°00'43.4"E  
**Serial Number:** N/A

## Ram Bagh Quarter

### Is the Building in-use or abandoned?

- In-use  
 Not in-use/ Abandoned

### Historic Building type

- Pre Partition  
 Post Partition (1947-1970)  
 Modern (1970's onwards)

### Programme:

- Residential  
 Commercial  
 Religious

### Identify the Building Crafts found on the selected Building:

- Woodwork  
 Painting - Fresco - Naqqashi  
 Stucco Work - Lime Work  
 Brick Imitation  
 Calligraphy  
 Fretwork - Wood  
 Fretwork - Stone  
 Tile Work - Kashi  
 Others \_\_\_\_\_

### Condition

- Dilapidated  
 Fair  
 Average  
 Good

### Present Usage:

- Ground Floor - Meezan Bank  
 First Floor - Agfa Office  
 Second Floor - Agfa Office  
 Third Floor - Agfa Office  
 Fourth Floor - Storage  
 Fifth Floor - Storage

### Details:



### Location Map:



## Bhoja Terrace.

**Current Road:** Aram Bagh Road  
**Old Street Name:** Ram Bagh Road  
**Construction Material:** Cement blocks

**Coordinates:** 24°51'17.5"N  
67°00'43.2"E

**Serial Number:** N/A



## Ram Bagh Quarter

### Is the Building in-use or abandoned?

In-use  
 Not in-use /Abandoned

### Identify the Building Crafts found on the selected Building:

Woodwork  Fretwork - Wood   
 Painting - Fresco - Naqqashi  Fretwork - Stone   
 Stucco Work - Lime Work  Tile Work - Kashi   
 Brick Imitation  Others - Stone   
 Calligraphy  column

### Details:



### Historic Building type

Pre Partition  
 Post Partition (1947-1970)  
 Modern (1970's onwards)

### Condition

Dilapidated  
 Fair  
 Average  
 Good

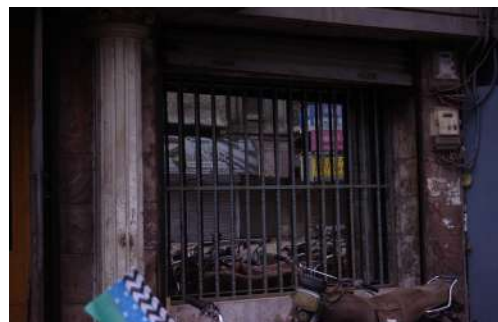
### Programme:

Residential   
 Commercial   
 Religious

### Present Usage:

Ground Floor - Commercial  
 First Floor - Abandoned  
 Second Floor - Abandoned  
 Third Floor - Residential  
 Fourth Floor - Residential  
 Fifth Floor - Residential

### Location Map:





## Shamim Mansion.



**Current Road:** Shahrah-e-Liaquat  
**Old Street Name:** N/A  
**Construction Material:** Stone Masonary  
**Coordinates:** 24°51'17.2"N  
 67°00'42.6"E  
**Serial Number:** N/A

## Ram Bagh Quarter

### Is the Building in-use or abandoned?

- In-use
- Not in-use/Abandoned

### Historic Building type

- Pre Partition
- Post Partition (1947-1970)
- Modern (1970's onwards)

### Programme:

- Residential
- Commercial
- Religious

### Identify the Building Crafts found on the selected Building:

- Woodwork
- Painting - Fresco - Naqqashi
- Stucco Work - Lime Work
- Brick Imitation
- Calligraphy
- Fretwork - Wood
- Fretwork - Stone
- Tile Work - Kashi
- Others - Stone work

### Condition

- Dilapidated
- Fair
- Average
- Good

### Present Usage:

- Ground Floor - Commercial
- First Floor - Residential
- Second Floor - Residential
- Third Floor - Residential
- Fourth Floor - Residential

### Details:



### Location Map:





## Devidas Building

**Current Road:** Dr. Ziauddin Rd.  
**Old Street Name:** Kutchery Rd.  
**Construction Material:** Stone Masonary

**Coordinates:** 24°51'16.6"N  
67°00'42.2"E

**Serial Number:** N/A



## Ram Bagh Quarter

### Is the Building in-use or abandoned?

- In-use
- Not in-use /Abandoned

- ### Historic Building type
- Pre Partition
  - Post Partition (1947-1970)
  - Modern (1970's onwards)

- ### Programme:
- Residential
  - Commercial
  - Religious

### Identify the Building Crafts found on the selected Building:

- Woodwork
- Painting - Fresco - Naqqashi
- Stucco Work - Lime Work
- Brick Imitation
- Calligraphy
- Fretwork - Wood
- Fretwork - Stone
- Tile Work - Kashi
- Others - Grill

### Condition

- Dilapidated
- Fair
- Average
- Good

- ### Present Usage:
- Ground Floor - Commercial
  - First Floor - Residential
  - Second Floor - Residential
  - Third Floor - Residential
  - Fourth Floor - Residential

### Details:



### Location Map:





## Salika Enterprise.

**Current Road:** Shahrah-e-Liaquat  
**Old Street Name:** N/A  
**Construction Material:** Stone Masonary

**Coordinates:** 24°51'16.5"N  
67°00'41.8"E

**Serial Number:** KAR/RAB/017



## Ram Bagh Quarter

### Is the Building in-use or abandoned?

- In-use
- Not in-use/Abandoned

### Historic Building type

- Pre Partition
- Post Partition (1947-1970)
- Modern (1970's onwards)

### Programme:

- Residential
- Commercial
- Religious

### Identify the Building Crafts found on the selected Building:

- Woodwork
- Painting - Fresco - Naqqashi
- Stucco Work - Lime Work
- Brick Imitation
- Calligraphy
- Fretwork - Wood
- Fretwork - Stone
- Tile Work - Kashi
- Others - Grill

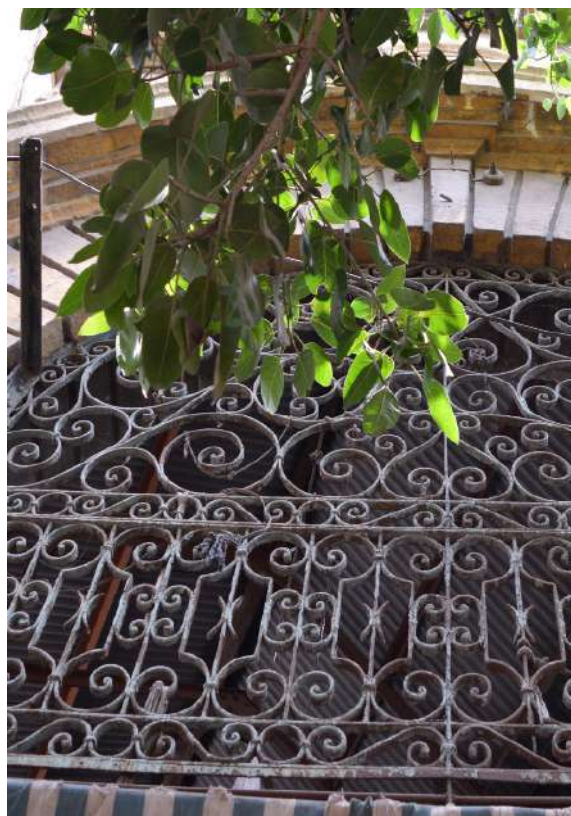
### Condition

- Dilapidated
- Fair
- Average
- Good

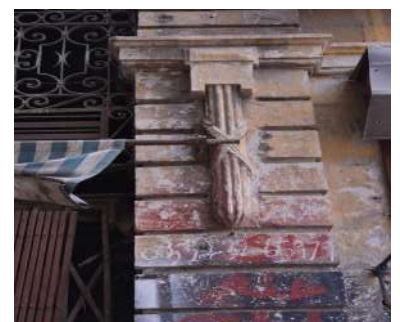
### Present Usage:

Ground Floor - Salika Enterprise

### Details:



### Location Map:





## Shelter Bldg.

**Current Road:** Dr. Ziauddin Ahmed Rd.  
**Old Street Name:** Kutchery Road  
**Construction Material:** Stone Masonary

**Coordinates:** 24°51'16.3"N  
67°00'41.5"E

**Serial Number:** N/A



## Ram Bagh Quarter

### Is the Building in-use or abandoned?

- In-use   
 Not in-use /Abandoned

### Identify the Building Crafts found on the selected Building:

- Woodwork  Fretwork - Wood   
 Painting - Fresco - Naqqashi  Fretwork - Stone   
 Stucco Work - Lime Work  Tile Work - Kashi   
 Brick Imitation  Others \_\_\_\_\_   
 Calligraphy

### Details:



### Historic Building type

- Pre Partition   
 Post Partition (1947 1970)   
 Modern (1970's onwards)

### Condition

- Dilapidated   
 Fair   
 Average   
 Good

### Programme:

- Residential   
 Commercial   
 Religious

### Present Usage:

- Ground Floor - Commercial   
 First Floor - Residential   
 Second Floor - Residential   
 Third Floor - Residential   
 Fourth Floor - Residential

### Location Map:



## Chandna Manzil.



**Current Road:** Shahrah-e-Liaquat  
**Coordinates:** 24°51'16.5"N  
**Old Street Name:** 67°00'41.1"E  
 N/A  
**Construction Material:** Stone Masonary  
**Serial Number:** N/A

## Ram Bagh Quarter

### Is the Building in-use or abandoned?

- In-use    
 Not in-use /Abandoned

### Historic Building type

- Pre Partition    
 Post Partition (1947-1970)    
 Modern (1970's onwards)

### Programme:

- Residential    
 Commercial    
 Religious

### Identify the Building Crafts found on the selected Building:

- Woodwork  Fretwork - Wood    
 Painting - Fresco - Naqqashi  Fretwork - Stone    
 Stucco Work - Lime Work  Tile Work - Kashi    
 Brick Imitation  Others -\_Grill\_    
 Calligraphy

### Condition

- Dilapidated    
 Fair    
 Average    
 Good

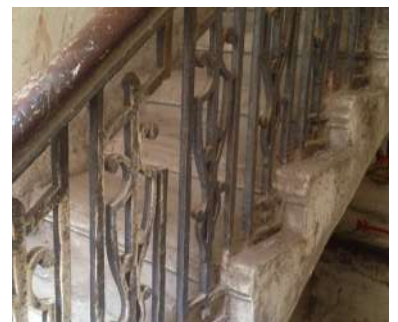
### Present Usage:

- Ground Floor - Bank Al Habib (Commercial).    
 First Floor - Residential    
 Second Floor- Residential    
 Third Floor- Residential

### Details:



### Location Map:





## Sita Kunj

**Current Road:**  
Hormusjee Street

**Coordinates:**  
24°51'16.9"N

**Old Street Name:**  
N/A

67°00'42.8"E

**Construction Material:**  
Stone Masonry

**Serial Number:**  
KAR/RAB/016



## Ram Bagh Quarter

### Is the Building in-use or abandoned?

- In-use   
Not in-use /Abandoned

- Historic Building type**
- Pre Partition
  - Post Partition (1947-1970)
  - Modern (1970's onwards)

- Programme:**
- Residential
  - Commercial
  - Religious

### Identify the Building Crafts found on the selected Building:

- Woodwork
- Painting - Fresco - Naqqashi
- Stucco Work - Lime Work
- Brick Imitation
- Calligraphy
- Fretwork - Wood
- Fretwork - Stone
- Tile Work - Kashi
- Others- Stone
- Columns

### Condition

- Dilapidated
- Fair
- Average
- Good

- Present Usage:**
- Ground Floor - Commercial
  - First Floor - Residential
  - Second Floor - Residential
  - Third Floor - Residential
  - Fourth Floor - Residential

### Details:



### Location Map:





## Pak Center.

**Current Road:** Seva Kunj Street  
**Old Street Name:** N/A  
**Construction Material:** Cement Blocks

**Coordinates:** 24°51'16.7"N  
67°00'45.6"E

**Serial Number:** N/A



## Ram Bagh Quarter

### Is the Building in-use or abandoned?

In-use   
 Not in-use /Abandoned

### Identify the Building Crafts found on the selected Building:

Woodwork  Fretwork - Wood   
 Painting - Fresco - Naqqashi  Fretwork - Stone   
 Stucco Work - Lime Work  Tile Work - Kashi   
 Brick Imitation  Others - \_\_\_\_\_   
 Calligraphy

### Details:



### Historic Building type

Pre Partition   
 Post Partition (1947-1970)   
 Modern (1970's onwards)

### Condition

Dilapidated   
 Fair   
 Average   
 Good

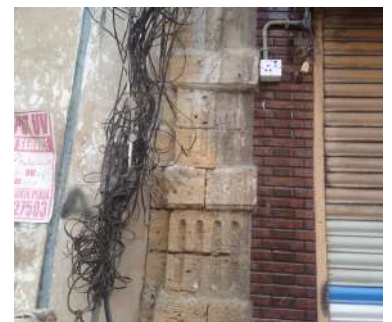
### Programme:

Residential   
 Commercial   
 Religious

### Present Usage:

Ground Floor - Card Shops (Commercial)   
 First Floor - Residential   
 Second Floor - Residential   
 Third Floor - Residential   
 Fourth Floor - Residential   
 Fifth Floor - Residential

### Location Map:





## Mendoza Building.

**Current Road:** Aram Bagh Road  
**Old Street Name:** Ram Bagh Road  
**Construction Material:** Stone Masonry

**Coordinates:** 24°51'17.0"N  
67°00'44.9"E

**Serial Number:** KAR/RAB/019



## Ram Bagh Quarter

### Is the Building in-use or abandoned?

In-use  
 Not in-use /Abandoned

### Identify the Building Crafts found on the selected Building:

Woodwork  Fretwork - Wood   
 Painting - Fresco - Naqqashi  Fretwork - Stone   
 Stucco Work - Lime Work  Tile Work - Kashi   
 Brick Imitation  Others - Jharoka-style balconies   
 Calligraphy

### Details:



### Historic Building type

Pre Partition  
 Post Partition (1947-1970)  
 Modern (1970's onwards)

### Condition

Dilapidated  
 Fair  
 Average  
 Good

### Programme:

Residential   
 Commercial   
 Religious

### Present Usage:

Ground Floor - Abandoned  
 First Floor - Abandoned (Destroyed)  
 Second Floor - Abandoned (Destroyed)

### Location Map:





Unknown.

**Current Road:** Pinjrapur Street  
**Coordinates:** 24°51'17.3"N  
**Old Street Name:** 67°00'45.6"E  
 N/A  
**Construction Material:** Stone Masonry  
**Serial Number:** N/A



## Ram Bagh Quarter

### Is the Building in-use or abandoned?

- In-use  
 Not in-use /Abandoned

### Historic Building type

- Pre Partition  
 Post Partition (1947-1970)  
 Modern (1970's onwards)

### Programme:

- Residential  
 Commercial  
 Religious

### Identify the Building Crafts found on the selected Building:

- Woodwork  
 Painting - Fresco - Naqqashi  
 Stucco Work - Lime Work  
 Brick Imitation  
 Calligraphy  
 Fretwork - Wood  
 Fretwork - Stone  
 Tile Work - Kashi  
 Others- \_\_\_\_\_

### Condition

- Dilapidated  
 Fair  
 Average  
 Good

### Present Usage:

- Ground Floor - Abandoned (Destroyed)

### Details:



### Location Map:





## Seva Kunj.

**Current Road:**

Aram Bagh Road

**Coordinates:**

24°51'18.0"N

**Old Street Name:**

Ram Bagh Road

67°00'44.8"E

**Construction Material:**

Stone Masonry

**Serial Number:**

KAR/RAB/018



## Ram Bagh Quarter

**Is the Building in-use or abandoned?**

- In-use
- Not in-use /Abandoned

**Historic Building type**

- Pre Partition
- Post Partition (1947-1970)
- Modern (1970's onwards)

**Programme:**

- Residential
- Commercial
- Religious

**Identify the Building Crafts found on the selected Building:**

- Woodwork
- Painting - Fresco - Naqqashi
- Stucco Work - Lime Work
- Brick Imitation
- Calligraphy
- Fretwork - Wood
- Fretwork - Stone
- Tile Work - Kashi
- Others \_\_\_\_\_

**Condition**

- Dilapidated
- Fair
- Average
- Good

**Present Usage:**

- Ground Floor - Printing Press
- First Floor - Abandoned
- Second Floor - Abandoned

**Details:**



**Location Map:**





## Sarnagati Building 2.



**Current Road:** Dr. Ziauddin Road  
**Old Street Name:** Kuthcery Road  
**Construction Material:** Stone Masonry  
**Coordinates:** 24°51'16.1"N  
 67°00'43.8"E  
**Serial Number:** KAR/RAB/013

## Ram Bagh Quarter

### Is the Building in-use or abandoned?

- In-use
- Not in-use /Abandoned

### Historic Building type

- Pre Partition
- Post Partition (1947-1970)
- Modern (1970's onwards)

### Programme:

- Residential
- Commercial
- Religious

### Identify the Building Crafts found on the selected Building:

- Woodwork
- Painting - Fresco - Naqqashi
- Stucco Work - Lime Work
- Brick Imitation
- Calligraphy
- Fretwork - Wood
- Fretwork - Stone
- Tile Work - Kashi
- Others \_\_\_\_\_

### Condition

- Dilapidated
- Fair
- Average
- Good

### Present Usage:

- Ground Floor - Printing Press
- First Floor - Abandoned Library
- Second Floor - Office of Shahani Associates

### Details:

### Location Map:





## Sarnagati Building 1.

**Current Road:** Hormusjee Street  
**Coordinates:** 24°51'16.4"N  
**Old Street Name:** 67°00'43.3"E  
 N/A  
**Construction Material:** Stone Masonry  
**Serial Number:** KAR/RAB/014



## Ram Bagh Quarter

### Is the Building in-use or abandoned?

- In-use
- Not in-use /Abandoned

- Historic Building type**
- Pre Partition
  - Post Partition (1947-1970)
  - Modern (1970's onwards)

- Programme:**
- Residential
  - Commercial
  - Religious

### Identify the Building Crafts found on the selected Building:

- Woodwork
- Painting - Fresco - Naqqashi
- Stucco Work - Lime Work
- Brick Imitation
- Calligraphy
- Fretwork - Wood
- Fretwork - Stone
- Tile Work - Kashi
- Others - Stone carvings

### Condition

- Dilapidated
- Fair
- Average
- Good

- Present Usage:**
- Ground Floor - Commercial
  - First Floor - Abandoned (Destroyed)

### Details:

### Location Map:





## Khanum Chambers.

**Current Road:** Aram Bagh Road  
**Old Street Name:** Ram Bagh Road  
**Construction Material:** Stone Masonry

**Coordinates:** 24°51'16.6"N  
67°00'43.1"E

**Serial Number:** KAR/RAB/015



## Ram Bagh Quarter

### Is the Building in-use or abandoned?

- In-use  
 Not in-use /Abandoned

### Identify the Building Crafts found on the selected Building:

- Woodwork  Fretwork - Wood   
 Painting - Fresco - Naqqashi  Fretwork - Stone   
 Stucco Work - Lime Work  Tile Work - Kashi   
 Brick Imitation  Others - Stone   
 Calligraphy  carving

### Details:



### Historic Building type

- Pre Partition  
 Post Partition (1947-1970)  
 Modern (1970's onwards)

### Condition

- Dilapidated  
 Fair  
 Average  
 Good

### Programme:

- Residential   
 Commercial   
 Religious

### Present Usage:

- Ground Floor - Abandoned

### Location Map:





## Agfa Carim's House.

**Current Road:** Aram Bagh Road  
**Old Street Name:** Ram Bagh Road  
**Construction Material:** Cement blocks  
**Coordinates:** 24°51'16.9"N  
 67°00'43.5"E  
**Serial Number:** N/A



## Ram Bagh Quarter

### Is the Building in-use or abandoned?

- In-use    
 Not in-use /Abandoned

### Historic Building type

- Pre Partition    
 Post Partition (1947-1970)    
 Modern (1970's onwards)

### Programme:

- Residential    
 Commercial    
 Religious

### Identify the Building Crafts found on the selected Building:

- Woodwork  Fretwork - Wood    
 Painting - Fresco - Naqqashi  Fretwork - Stone    
 Stucco Work - Lime Work  Tile Work - Kashi    
 Brick Imitation  Others \_\_\_\_\_    
 Calligraphy

### Condition

- Dilapidated    
 Fair    
 Average    
 Good

### Present Usage:

- Ground Floor - Office for parking area.

### Details:



### Location Map:





## Hussaini Building.

**Current Road:** Hormusjee Street  
**Old Street Name:** N/A  
**Construction Material:** Stone Masonry

**Coordinates:** 24°51'16.9"N  
67°00'42.8"E

**Serial Number:** N/A



## Ram Bagh Quarter

### Is the Building in-use or abandoned?

In-use  
 Not in-use /Abandoned

### Identify the Building Crafts found on the selected Building:

Woodwork  Fretwork - Wood   
 Painting - Fresco - Naqqashi  Fretwork - Stone   
 Stucco Work - Lime Work  Tile Work - Kashi   
 Brick Imitation  Others - Stone   
 Calligraphy  Columns

### Details:



### Historic Building type

Pre Partition  
 Post Partition (1947-1970)  
 Modern (1970's onwards)

### Condition

Dilapidated  
 Fair  
 Average  
 Good

### Programme:

Residential  
 Commercial  
 Religious

### Present Usage:

Ground Floor - Commercial  
 First Floor - Storage  
 Second Floor - Residential  
 Third Floor - Residential

### Location Map:





## MASTER PLAN



**ZONE 10**  
0001-0005  
0006-0013  
0014-0018